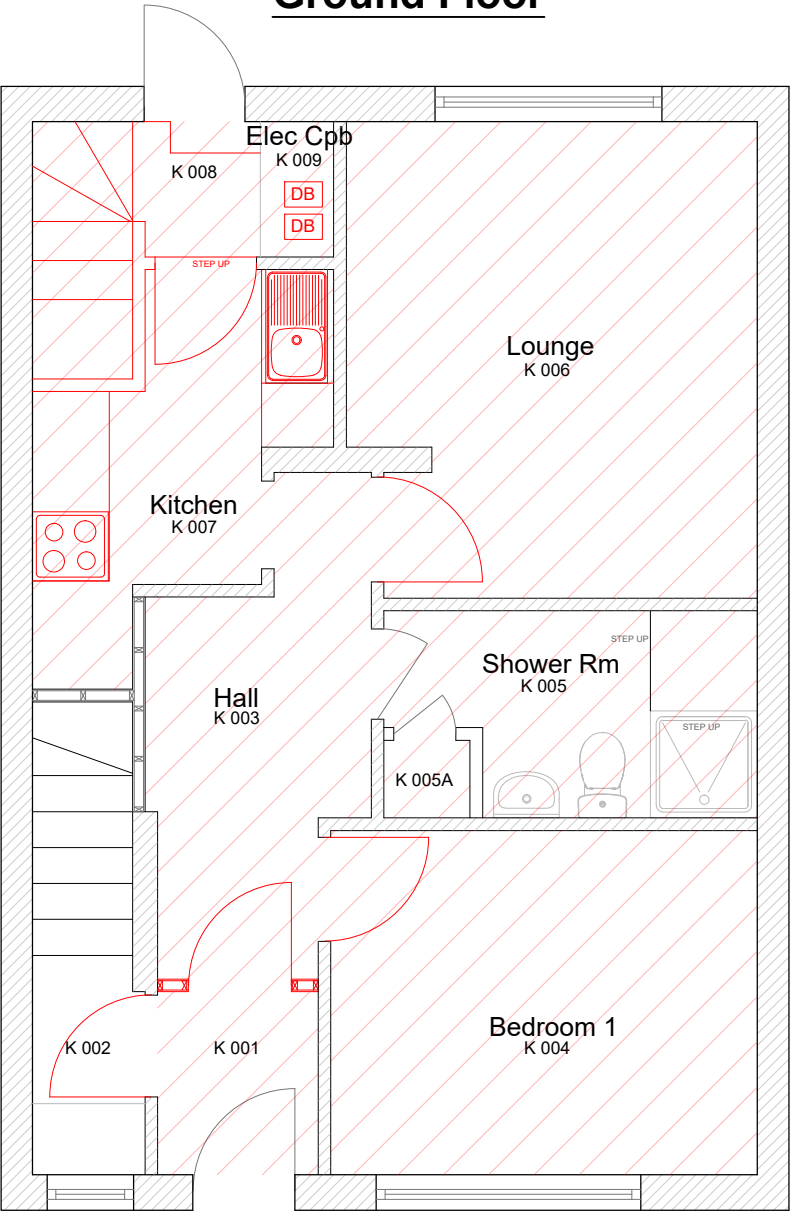


Ground Floor

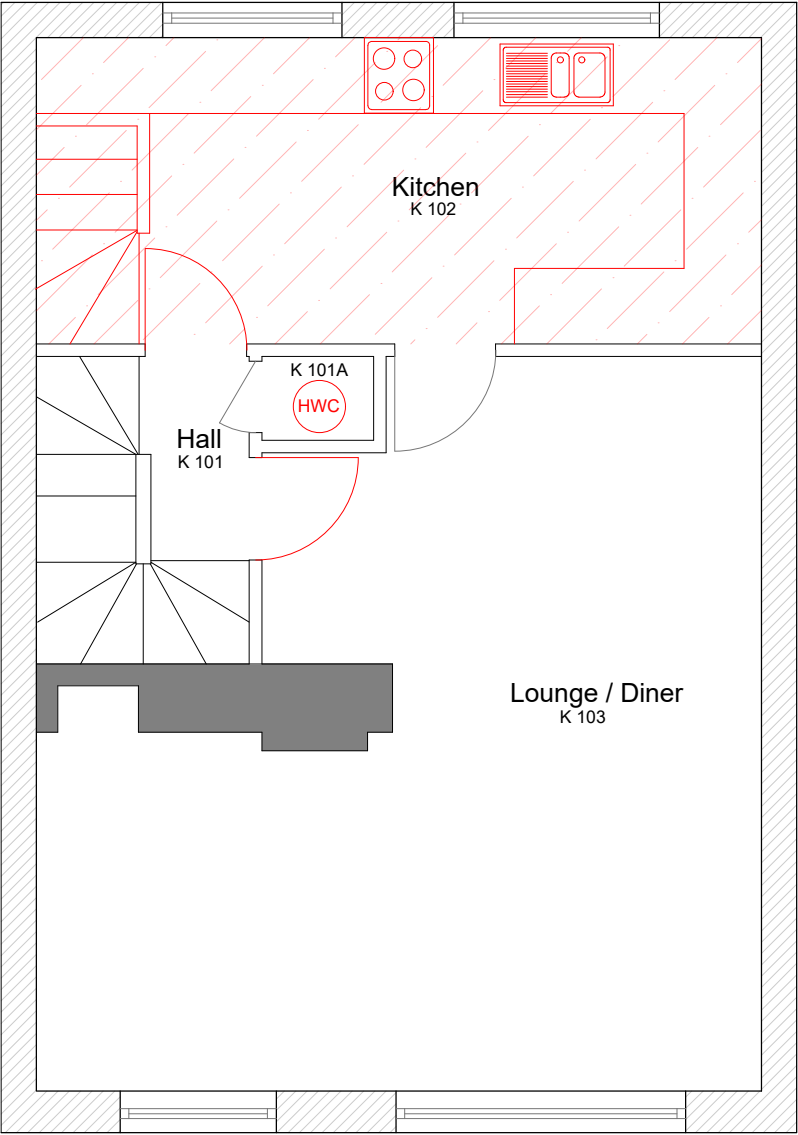


Ground Floor - Demolition / Enabling Notes

- To all hatched areas carefully remove ceiling mounted fixtures and fittings and set aside. Take down plasterboard ceiling finish and to expose timber joists throughout.
- Strip out staircase, stud partition, step and internal door to K008 and open up kitchen.
- Remove timber stud partition and door to entrance lobby K001.
- Remove kitchen units, worktops, sink and re-circulation hood.
- Strip kitchen tile flooring.
- Remove highlighted internal timber doors, frames and architrave. To be replaced with fire rated doorsets.
- Isolate hotwater pipework supply to basins and shower.
- Remove mixer shower unit from K005

Take down plasterboard ceilings and expose timber joists

First Floor

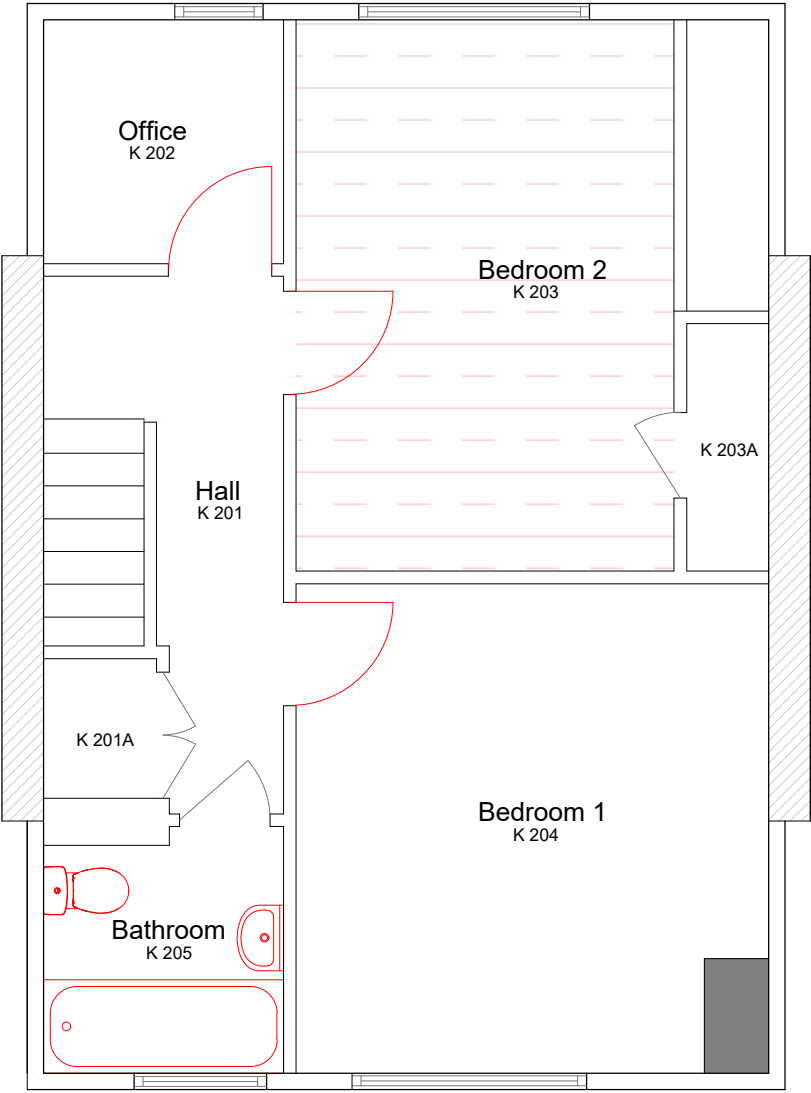


First Floor - Demolition / Enabling Notes

- To all hatched areas carefully remove ceiling mounted fixtures and fittings and set aside. Take down timber ceiling finish and expose timber joists throughout.
- Strip out stud half wall to staircase with K102.
- Strip out any high-level glazed screens to K101 partition walls.
- Isolate hotwater pipework supply to kitchen sink.
- Remove kitchen units, worktops, sink and re-circulation hood.
- Strip kitchen vinyl flooring.
- Remove highlighted internal timber doors, frames and architrave. To be replaced with fire rated doorsets.
- Isolate hotwater cylinder supply and remove.

Take down laminate ceilings and expose timber joists

Second Floor



Second Floor - Demolition / Enabling Notes

- To all hatched areas carefully remove ceiling mounted fixtures and fittings and set aside. Take down mineral fibre tile ceiling finish and expose timber joists throughout.
- Strip out any high-level glazed screens to K101 partition walls.
- Isolate hotwater pipework supply to bathroom sink.
- Remove bathroom sanitary appliances; bath, toilet, basin and mixer shower
- Strip bathroom vinyl.
- Remove highlighted internal timber doors, frames and architrave. To be replaced with fire rated doorsets.

Take down mineral fibre tile ceilings and expose timber joists

To be read alongside schedule of works

